



Offers Over £240,500 Freehold

17 GREENDALE CLOSE | WARSOP | MANSFIELD | NG20 0EB

**BuckleyBrown**  
ESTATE AGENTS

## HOME SWEET HOME!...

Nestled in the charming village of Warsop, this delightful detached three-bedroom property offers both comfort and convenience. Ideally situated close to local amenities, shops, schools, and transport links, it's the perfect setting for modern family living. Let's step inside...

As you enter through the welcoming hallway, you'll first come across the spacious kitchen. Featuring a range of matching wall and base units with complementary work surfaces, there's plenty of room for meal preparation and culinary creativity.

Continuing further, you'll find the heart of the home – the open-plan living and dining area. This generously sized space boasts bifold doors and patio doors that open onto the rear garden, seamlessly blending indoor and outdoor living. It's the perfect place to entertain family and friends. Completing the ground floor is a convenient WC.

Upstairs, you'll discover three well-proportioned bedrooms, each offering ample potential for personalization. A stylish family bathroom completes this level, featuring a classic three-piece suite in white.

Externally, the property offers parking for one vehicle at the front. To the rear, a beautifully tiered garden awaits, surrounded by mature plants and shrubbery, creating a peaceful and private retreat. A dedicated patio area provides the perfect spot to relax and enjoy the warmer months.

This wonderful home must be seen to be fully appreciated!





#### Entrance Hall

Giving access to;

#### Downstairs WC 4'2" x 3'0"

Complete with low flush wc and pedestal wash hand basin.

#### Kitchen 8'1" x 10'6"

Complete with a range of matching wall and base units with complimentary work surface, inset sink and drainer with mixer tap, integrated oven with gas hob over and extractor hood above, space and plumbing for essential appliances, space for american style fridge freezer and window to front elevation.

#### Open Plan Living Diner 23'11" x 16'6"

A generous light and airy space with

laminated flooring, housing the stairs to the first floor, central heating radiator and having with bifold doors along with another set of patio doors leading out to the garden.

#### First Floor Accommodation

Having a storage cupboard and giving access to;

#### Bedroom One 10'6" x 10'10"

Having carpet flooring, central heating radiator and window to rear elevation.

#### Bedroom Two 9'10" x 9'8"

Having carpet flooring, central heating radiator and window to rear elevation.

#### Bedroom Three 6'5" x 9'8"

Having laminated flooring, window to rear elevation and central heating radiator.



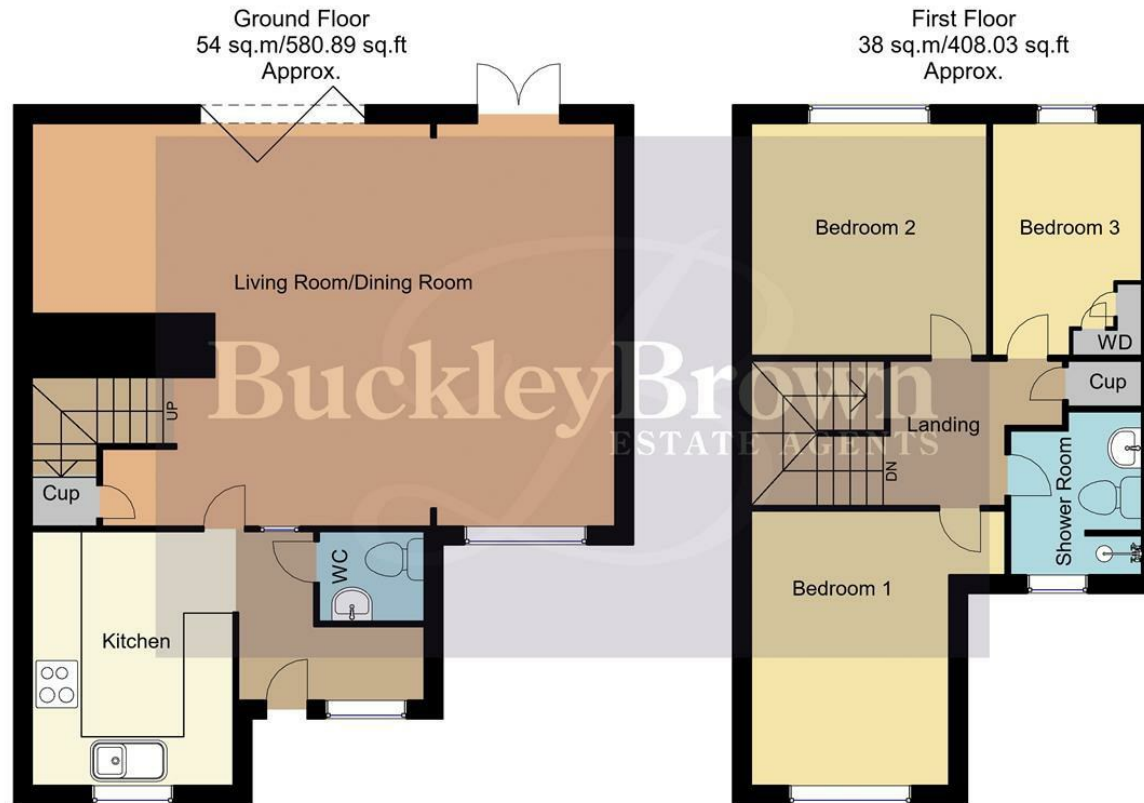
#### Shower Room 5'5" x 6'9"

The well appointed bathroom consists of a walk in shower cubicle, low flush WC, vanity wash hand basin and central heating radiator.

#### Outside

To the front of the property there is decorative graveled frontage and parking for one car. To the rear of the property there is gorgeous tiered garden with dedicated patio seating area. This garden has been landscaped beautifully and is full of character and we know you will enjoy spending time here in the warmer months,





Whilst every attempt has been made to ensure the accuracy of the floor plan contained here, no responsibility is taken for incorrect measurements of doors, windows, appliances and room or any error, omission or misstatement. Exterior and interior walls are drawn to scale based on interior measurements. Any figure given is for initial guidance only and should not be relied on as basis of valuation. These plans are for marketing purposes only and should be used as such by any prospective purchase. Specially no guarantee is should not be relied on as a basis of valuation. These plans are for marketing purposes only and should be used as such by any prospective purchase. Specifically no guarantee is given on the total square footage of the property if quoted on this plan.  
CC Ltd ©2018

**IMPORTANT:** we would like to inform prospective purchasers that these sales particulars have been prepared as a general guide only. A detailed survey has not been carried out, nor the services, appliances and fittings tested. Room sizes should not be relied upon for furnishing purposes and are approximate. If floor plans are included, they are for guidance only and illustration purposes only and may not be to scale. If there are any important matters likely to affect your decision to buy, please contact us before viewing the property.

Energy Efficiency Rating		Current	Potential
Very energy efficient - lower running costs			
(92 plus) <b>A</b>			83
(81-91) <b>B</b>			
(69-80) <b>C</b>			
(55-68) <b>D</b>		70	
(39-54) <b>E</b>			
(21-38) <b>F</b>			
(1-20) <b>G</b>			
Not energy efficient - higher running costs			
<b>England &amp; Wales</b>		EU Directive 2002/91/EC	

17 GREENDALE CLOSE  
WARSOP  
MANSFIELD  
NOTTINGHAMSHIRE  
NG20 0EB



## BuckleyBrown Estate Agents

55 - 57 Leeming Street | Mansfield | Nottinghamshire | NG18 1ND  
23 High Street | Edwinstowe | Nottinghamshire | NG21 9QP  
1 Market Place | Bolsover | Chesterfield | S44 6PN  
[www.buckleybrown.co.uk](http://www.buckleybrown.co.uk)

t: 01623 633 633  
t: 01623 633 633  
t: 01246 605121

**BuckleyBrown**  
ESTATE AGENTS

**IMPORTANT:** we would like to inform prospective purchasers that these sales particulars have been prepared as a general guide only. A detailed survey has not been carried out, nor the services, appliances and fittings tested. Room sizes should not be relied upon for furnishing purposes and are approximate. If floor plans are included, they are for guidance only and illustration purposes only and may not be to scale. If there are any important matters likely to affect your decision to buy, please contact us before viewing the property.